

SECTION: 10 LATITUDE: 26° 29' 28"
TOWNSHIP: 46 S. LONGITUDE: 81° 59' 24"
RANGE: 26 E.

Note: Upland Site Engineering by Hole Montes

0' 150' 300'
SCALE FEET

Lee County Aerial 2015



Note: Property lines per Lee County Property Appraiser.

Overall Site Map

SCALE: 1" = 300'

STATE OF FLORIDA
Hans J.M. Wilson
HANS J.M. WILSON
REGISTERED PROFESSIONAL ENGINEER
FLORIDA REGISTRATION NO. 39680
CA. LIC. NO. 8519
DATE: August 17, 2016 4:38:47 p.m.
Drawing: ROBL16MASTER.DWG

PERMIT PLANS, NOT FOR CONSTRUCTION



1938 Hill Avenue, Fort Myers, Florida 33901
Office: 239-334-6870 Fax: 239-334-7810
MARINE and ENVIRONMENTAL CONSULTANTS

8-4-16

jon

Roberts Development Corporation

SHEET

1/10

SECTION: 10 LATITUDE: 26° 29' 28"
 TOWNSHIP: 46 S. LONGITUDE: 81° 59' 24"
 RANGE: 26 E.

Note: Upland Site Engineering by Hole Montes

0' 150' 300'
 SCALE FEET



Soil Code	Soil Code Name
16	Peckish mucky fine sand
23	Wulfert muck
69	Matlacha gravelly fine sand
100	Waters of the Gulf of Mexico

Soils Map

SCALE: 1" = 300'

NOTE: Information per Soil Survey Staff, Natural Resources Conservation Service, United States Department of Agriculture. Web Soil Survey. Available online at <http://websoilsurvey.nrcs.usda.gov>. Accessed 8-4-16

Professional Engineer Seal for Hans J.M. Wilson, No. 39680, State of Florida. Includes a signature and a checkmark.

HANS J.M. WILSON
 REGISTERED PROFESSIONAL ENGINEER
 FLORIDA REGISTRATION NO. 39680
 CA. LIC. NO. 8519
 DATE: August 17, 2016 4:38:47 p.m.
 Drawing: ROBL16MASTER.DWG

PERMIT PLANS, NOT FOR CONSTRUCTION



1938 Hill Avenue, Fort Myers, Florida 33901
 Office: 239-334-6870 Fax: 239-334-7810
 MARINE and ENVIRONMENTAL CONSULTANTS

8-4-16

jon

Roberts Development Corporation

SHEET

2/10

SECTION: 10 LATITUDE: 26° 29' 28"
 TOWNSHIP: 46 S. LONGITUDE: 81° 59' 24"
 RANGE: 26 E.

Note: Upland Site Engineering by Hole Montes

0' 150' 300'
 SCALE FEET

Lee County Aerial 2015



Code	Description
1110	Low Density, Fixed Single Family Units
1300	High Density, Multiple Dwelling Units, Low Rise
1840	Marina's and Fish Camps
6120	Mangrove Swamp
8140	Roads and Highways
5110	Natural River, Stream, Waterway

FLUCCS Map

SCALE: 1" = 300'

NOTE: Information per FDEP Map Direct website,
<http://ca.dep.state.fl.us/mapdirect>. Accessed 8-4-16

Hans J.M. Wilson
 No. 39680
HANS J.M. WILSON
 REGISTERED PROFESSIONAL ENGINEER
 FLORIDA REGISTRATION NO. 39680
 CA. LIC. NO. 8519
 DATE: August 17, 2016 4:38:47 p.m.
 Drawing: ROBL16MASTER.DWG

PERMIT PLANS, NOT FOR CONSTRUCTION



1938 Hill Avenue, Fort Myers, Florida 33901
 Office: 239-334-6870 Fax: 239-334-7810
 MARINE and ENVIRONMENTAL CONSULTANTS

8-17-16

TM

Roberts Development Corporation

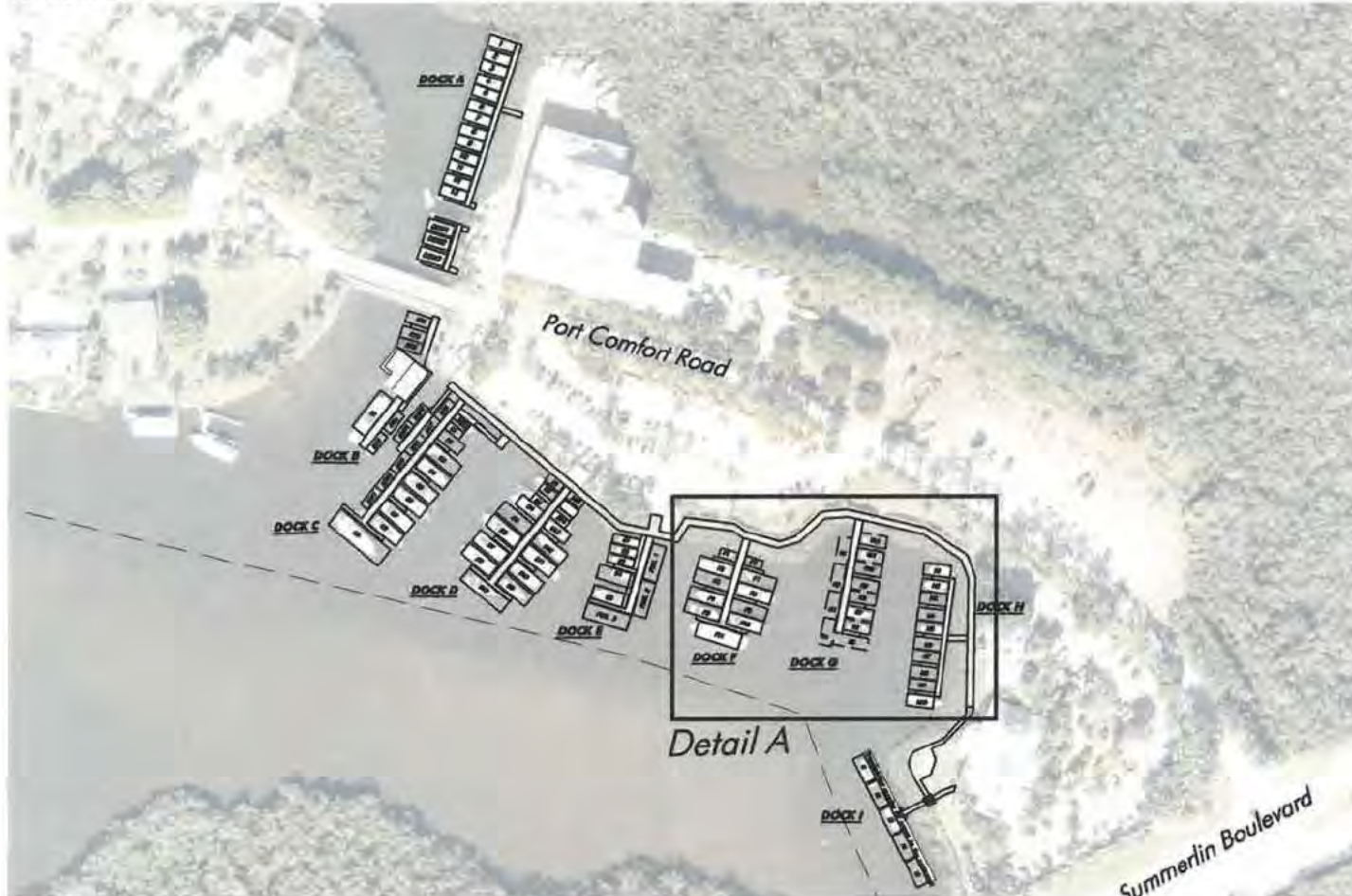
SHEET

3/10

SECTION: 10 LATITUDE: 26° 29' 28"
 TOWNSHIP: 46 S. LONGITUDE: 81° 59' 24"
 RANGE: 26 E.

Note: Upland Site Engineering by Hole Montes
 Lee County Aerial 2015

0' 100' 200'
 SCALE FEET



Note: Property lines per Lee County Property Appraiser.

Project Site Plan Slip Counts Operating

SCALE: 1" = 200'

PERMIT PLANS, NOT FOR CONSTRUCTION

- SLIP COUNTS**
- Dock A - 13 rental slips
 - 3 dry storage (west) (DSW 1-3) (temporary staging)
 - Dock B - 5 boat rentals (BR 1-5)
 - 1 rental slip (B 1)
 - Dock C - 2 boat ramp (RMP 1-2) (temporary staging)
 - 6 boat rentals (BR 6-12)
 - 7 rental slips (C 1-9)
 - Dock D - 17 rental slips (D 1-17)
 - Dock E - 5 rental slips (E 1-5)
 - 3 (Fuel 1-3) temporary
 - Dock F - 11 rental slips (F 1-11)
 - Dock G - 12 rental slips (G 1-12)
 - Dock H - 10 rental slips (H 1-10)
 - Dock I - 5 temporary slips (I 1-5) for restaurant patrons, slip count based on 25' vessel, lengths vary.
- Total - 87 permanent wet slips
- 3 fuel dock
 - 2 boat ramp staging
 - 3 dry storage staging
 - 5 restaurant mooring.
- Wet Slips Total @ 100
 Dry Storage Slips @ 133

Hans J.M. Wilson
 HANS J.M. WILSON
 REGISTERED PROFESSIONAL ENGINEER
 FLORIDA REGISTRATION NO. 39680
 CA. LIC. NO. 8519
 DATE: August 17, 2016 4:38:47 p.m.
 Drawing: ROBL16MASTER.DWG



1938 Hill Avenue, Fort Myers, Florida 33901
 Office: 239-334-6870 Fax: 239-334-7810
 MARINE and ENVIRONMENTAL CONSULTANTS

8-4-16
 hjmw

Roberts Development Corporation

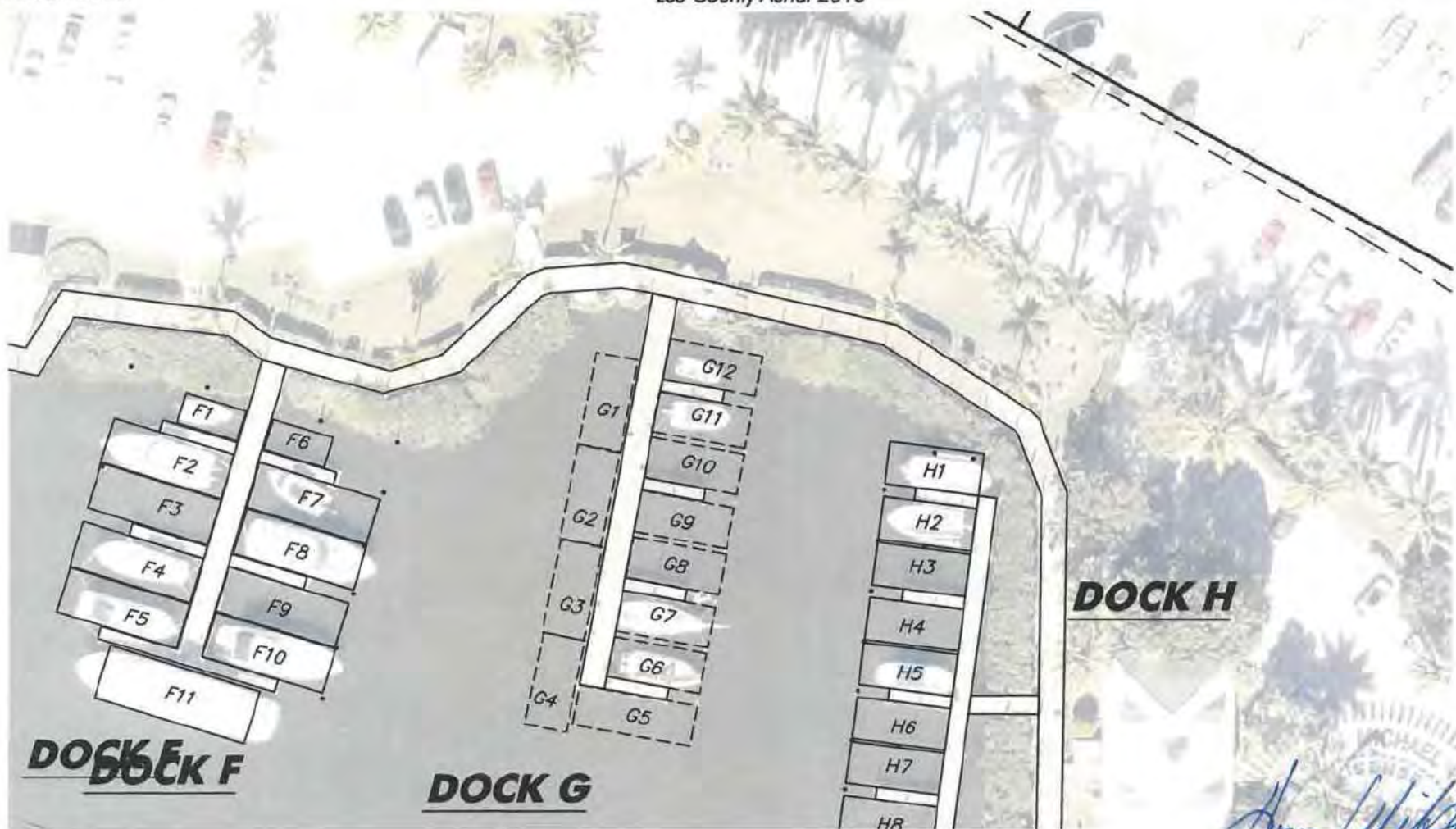
SHEET
 A/10

SECTION: 10 LATITUDE: 26° 29' 28"
 TOWNSHIP: 46 S. LONGITUDE: 81° 59' 24"
 RANGE: 26 E.

Note: Upland Site Engineering by Hole Montes

Lee County Aerial 2015

0' 25' 50'
 SCALE FEET



Detail A - Existing Dock Plan

SCALE: 1" = 50'

PERMIT PLANS, NOT FOR CONSTRUCTION

Hans J.M. Wilson
HANS J.M. WILSON
 REGISTERED PROFESSIONAL ENGINEER
 FLORIDA REGISTRATION NO. 39680
 CA. LIC. NO. 8519
 DATE: August 17, 2016 4:38:47 p.m.
 Drawing: ROBL16MASTER.DWG



1938 Hill Avenue, Fort Myers, Florida 33901
 Office: 239-334-6870 Fax: 239-334-7810
 MARINE and ENVIRONMENTAL CONSULTANTS

8-17-16

TM

Roberts Development Corporation

SHEET

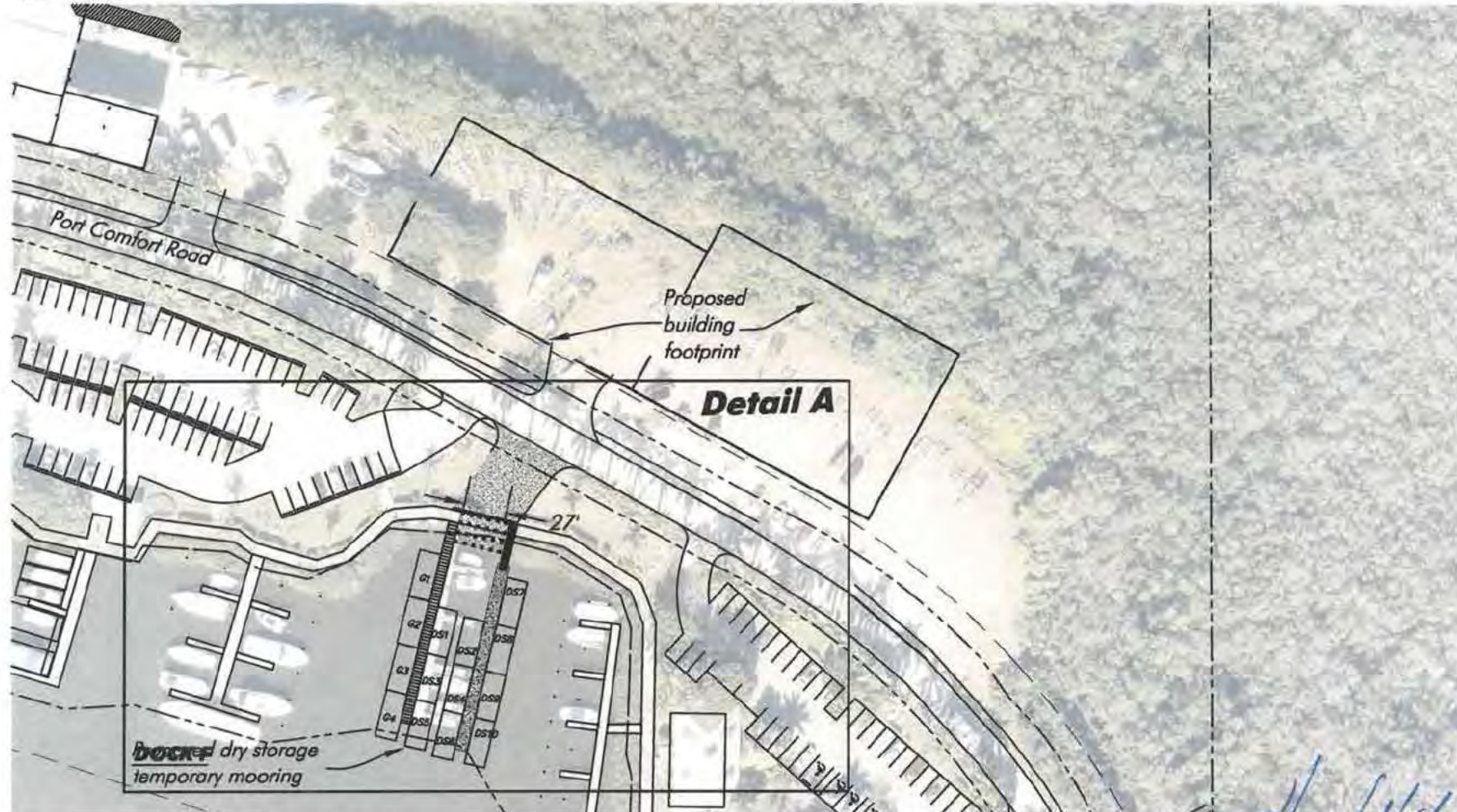
5/10

SECTION: 10 LATITUDE: 26° 29' 28"
TOWNSHIP: 46 S. LONGITUDE: 81° 59' 24"
RANGE: 26 E.

Note: Upland Site Engineering by Hole Montes

Lee County Aerial 2015

0' 50' 100'
SCALE FEET



Note: Property lines per Lee County Property Appraiser. Site improvements per Hole Montes Inc. project No. 2000.004

Proposed Dry Storage

SCALE: 1" = 100'

Hans J.M. Wilson
HANS J.M. WILSON
REGISTERED PROFESSIONAL ENGINEER
FLORIDA REGISTRATION NO. 39680
CA. LIC. NO. 8519
DATE: August 17, 2016 4:38:47 p.m.
Drawing: ROBL16MASTER.DWG

PERMIT PLANS, NOT FOR CONSTRUCTION



1938 Hill Avenue, Fort Myers, Florida 33901
Office: 239-334-6870 Fax: 239-334-7810
MARINE and ENVIRONMENTAL CONSULTANTS

8-17-16

TM

Roberts Development Corporation

SHEET

6/10

SECTION: 10 LATITUDE: 26° 29' 28"
 TOWNSHIP: 46 S. LONGITUDE: 81° 59' 24"
 RANGE: 26 E.

Note: Upland Site Engineering by Hole Montes

0' 25' 50'
 SCALE FEET

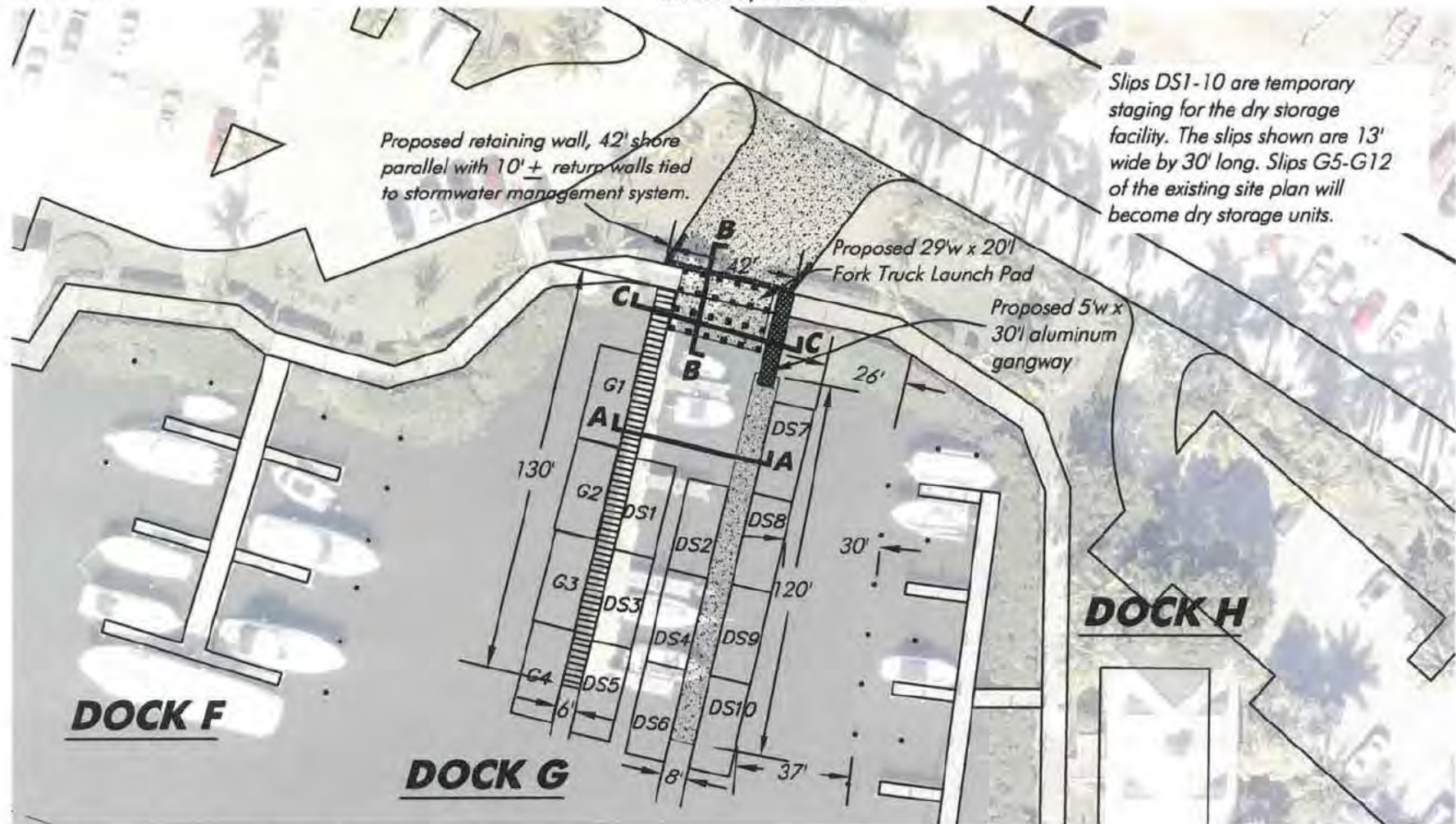
Lee County Aerial 2015

Slips DS1-10 are temporary staging for the dry storage facility. The slips shown are 13' wide by 30' long. Slips G5-G12 of the existing site plan will become dry storage units.

Proposed retaining wall, 42' shore parallel with 10' ± return walls tied to stormwater management system.

Proposed 29'w x 20' Fork Truck Launch Pad

Proposed 5'w x 30' aluminum gangway



Note: Property lines per Lee County Property Appraiser. Site improvements per Hole Montes Inc. project No. 2000.004

Detail A - Proposed Dock Plan

SCALE: 1" = 50'

HANS J.M. WILSON
 REGISTERED PROFESSIONAL ENGINEER
 FLORIDA REGISTRATION NO. 39680
 CA. LIC. NO. 8519
 DATE: January 16, 2017 10:50:51 a.m.
 Drawing: ROBL16MASTERHW.DWG



1938 Hill Avenue, Fort Myers, Florida 33901
 Office: 239-334-6870 Fax: 239-334-7810
 MARINE and ENVIRONMENTAL CONSULTANTS

1-16-17

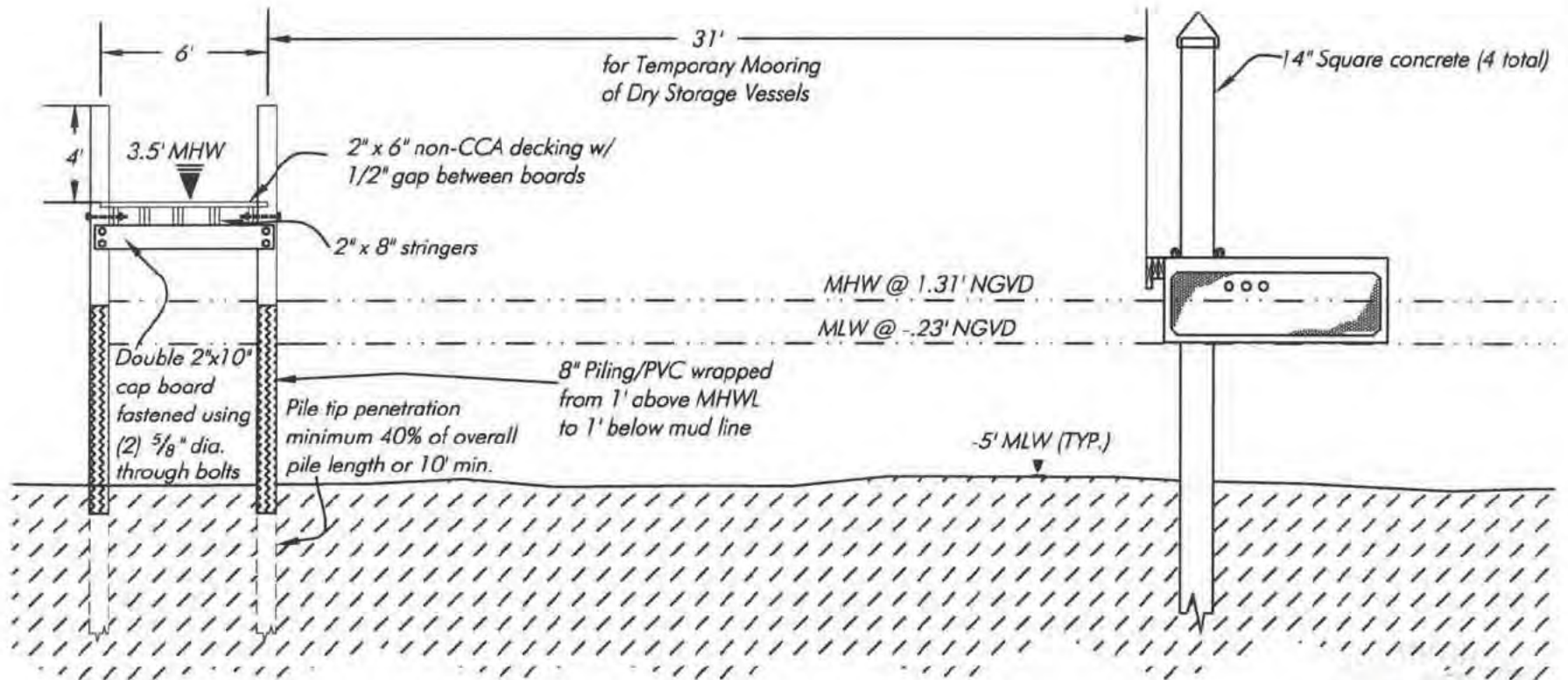
hjmw

Roberts Development Corporation

SHEET

SECTION: 10 LATITUDE: 26° 29' 28"
 TOWNSHIP: 46 S. LONGITUDE: 81° 59' 24"
 RANGE: 26 E.

Note: Upland Site Engineering by Hole Montes



Section A-A

SCALE: 1" = 6'

Hans J.M. Wilson
HANS J.M. WILSON
 REGISTERED PROFESSIONAL ENGINEER
 FLORIDA REGISTRATION NO. 39680
 CA. LIC. NO. 8519
 DATE: August 17, 2016 4:38:47 p.m.
 Drawing: ROBL16MASTER.DWG

PERMIT PLANS, NOT FOR CONSTRUCTION



1938 Hill Avenue, Fort Myers, Florida 33901
 Office: 239-334-6870 Fax: 239-334-7810
 MARINE and ENVIRONMENTAL CONSULTANTS

8-4-16

jon

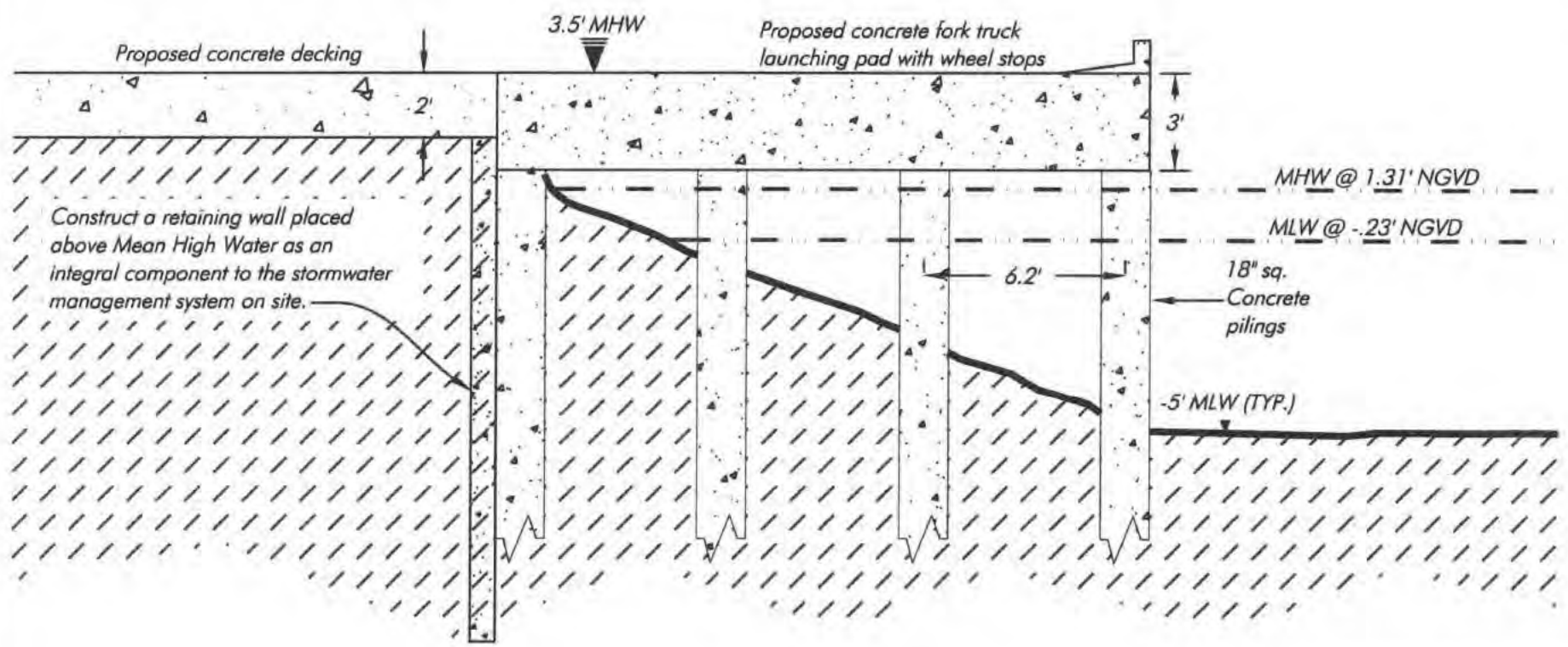
Roberts Development Corporation

SHEET

8/10

SECTION: 10 LATITUDE: 26° 29' 28"
 TOWNSHIP: 46 S. LONGITUDE: 81° 59' 24"
 RANGE: 26 E.

Note: Upland Site Engineering by Hole Montes



Section B-B

SCALE: 1" = 5'

HANS J.M. WILSON
 REGISTERED PROFESSIONAL ENGINEER
 FLORIDA REGISTRATION NO. 39680
 CA. LIC. NO. 8519
 DATE: January 16, 2017 10:50:51 a.m.
 Drawing: ROBL16MASTERHW.DWG



1938 Hill Avenue, Fort Myers, Florida 33901
 Office: 239-334-6870 Fax: 239-334-7810
 MARINE and ENVIRONMENTAL CONSULTANTS

1-16-17
 hjmw

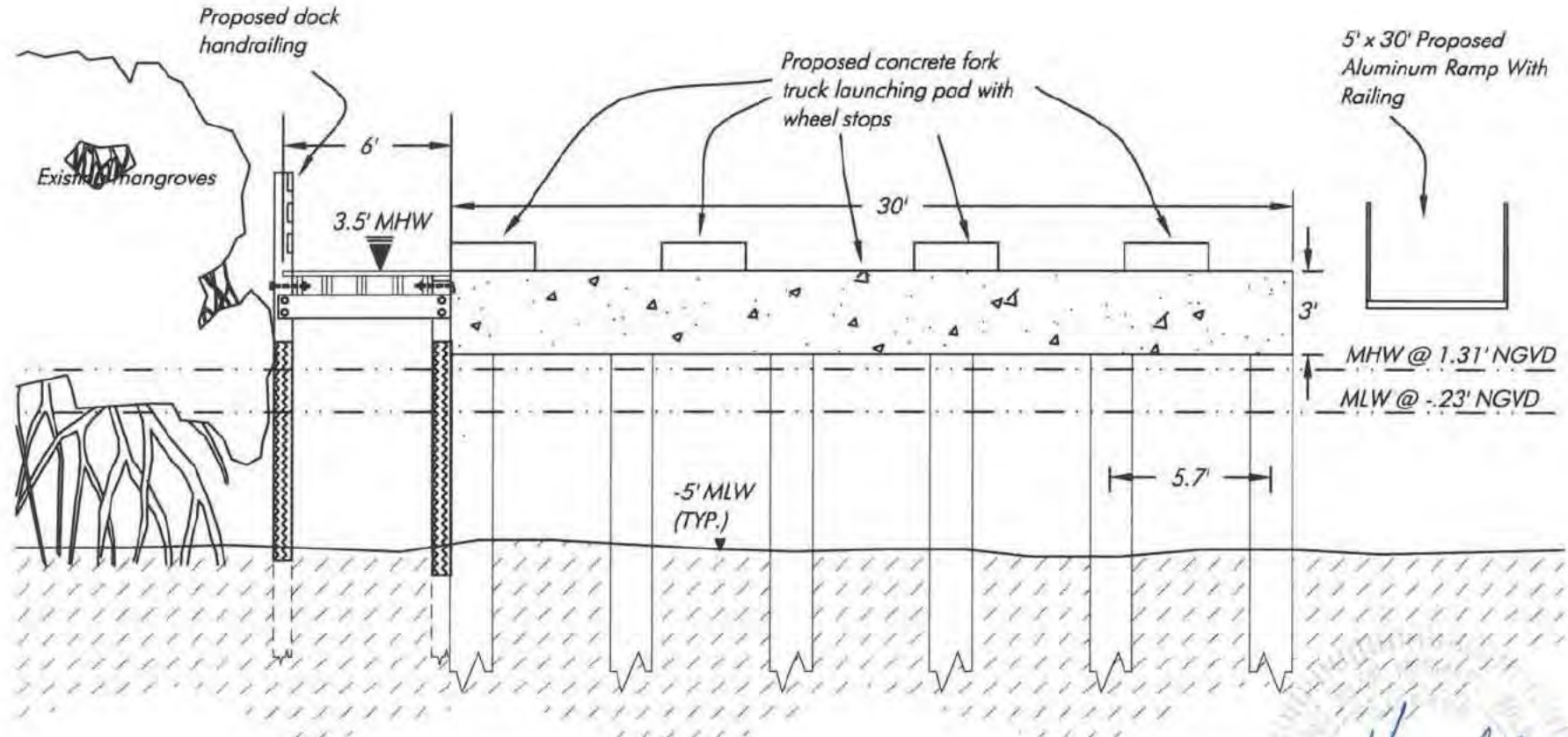
Roberts Development Corporation

SHEET

SECTION: 10 LATITUDE: 26° 29' 28"
 TOWNSHIP: 46 S. LONGITUDE: 81° 59' 24"
 RANGE: 26 E.

Note: Upland Site Engineering by Hole Montes

0' 3' 6'
 SCALE FEET



Section C-C

SCALE: 1" = 6'

Hans Wilson

HANS J.M. WILSON
 REGISTERED PROFESSIONAL ENGINEER
 FLORIDA REGISTRATION NO. 39680
 CA. LIC. NO. 8519
 DATE: August 17, 2016 4:38:47 p.m.
 Drawing: ROBL16MASTER.DWG

PERMIT PLANS, NOT FOR CONSTRUCTION



1938 Hill Avenue, Fort Myers, Florida 33901
 Office: 239-334-6870 Fax: 239-334-7810
 MARINE and ENVIRONMENTAL CONSULTANTS

8-4-16

jon

Roberts Development Corporation

SHEET
 10/10